



DATASHEET

Bolt for AX5

Compatible with:
AX5

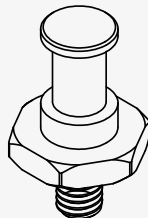
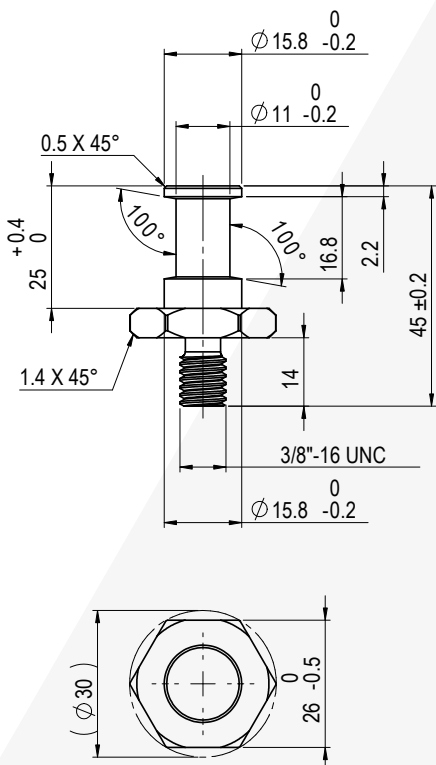


Screw into the AX5 bracket's 3/8" thread to mount it via SuperClamps and other grips.

SPECIFICATIONS

Order Code	AX1-BLT
Thread	3/8"-16 UNC
Dimensions (mm/inch)	Ø30 x 45 / Ø1.18 x 1.77
Weight (kg/lbs)	0.058 / 0.13
Material	Stainless Steel

DRAWINGS



USE CASES

AX5 mounted to truss with Bolt and SuperClamp

